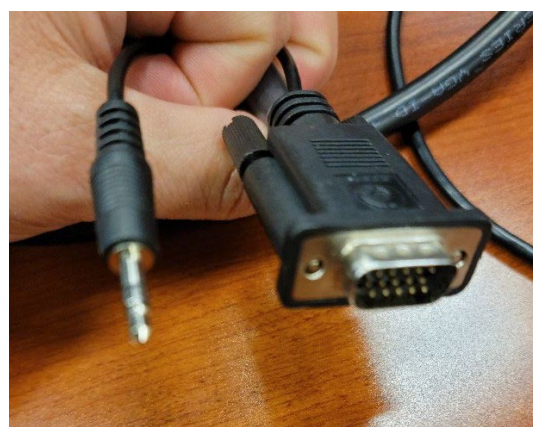
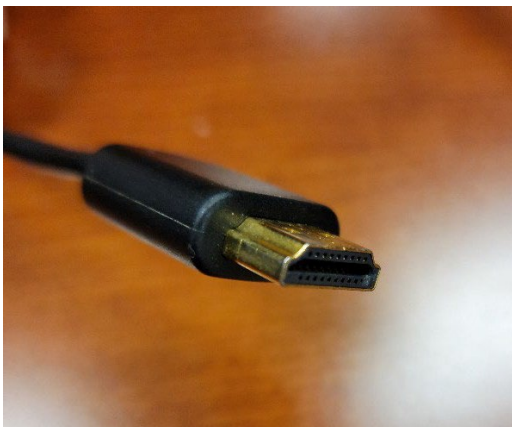
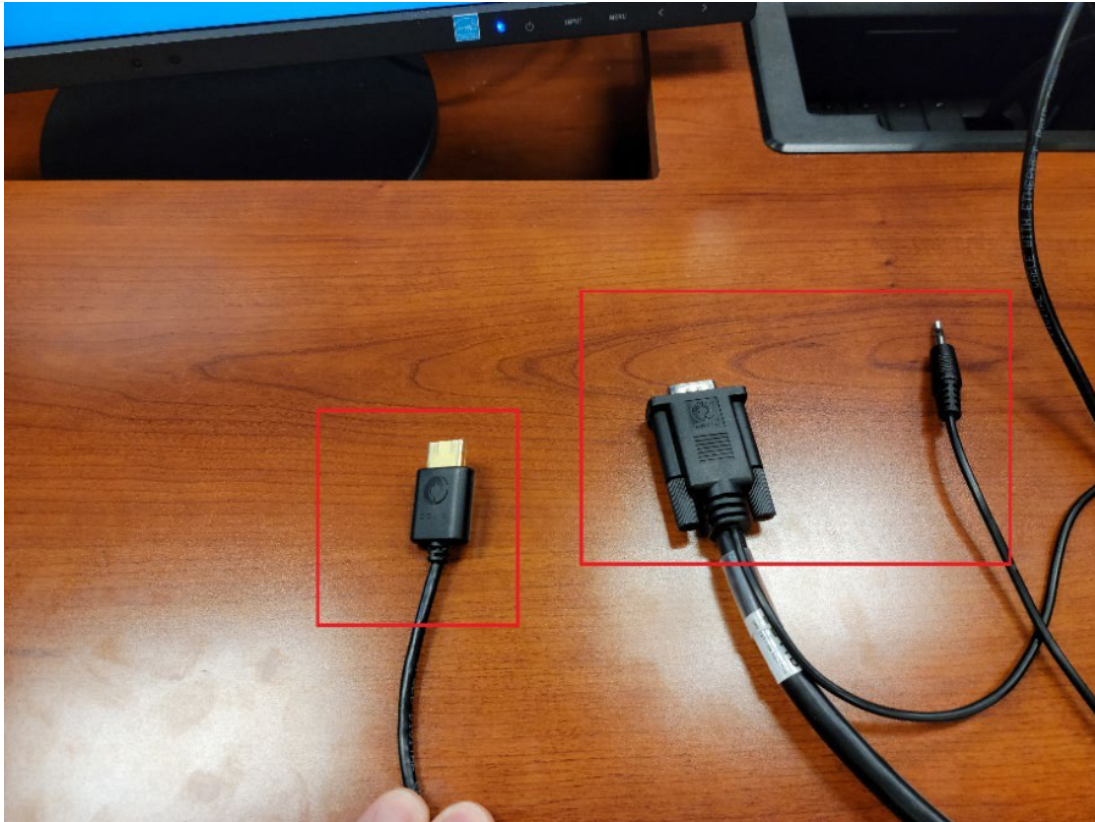


SAINT JOHNS COUNTY COURTROOM PRESENTATION TECHNOLOGY

Each courtroom is equipped with two large flat-panel wall-mounted monitors. There is also a small monitor that can be positioned for easy viewing from the witness stand. Blue arrows indicate the monitors in the sample courtroom image below.



At the podium in each courtroom, there is a connection point with an HDMI cable and a VGA Cable. The HDMI cable also carries audio. If using the VGA cable, there is a separate 3.5mm standard audio cable. Power is also available at the podium.



Please note that if you need to display from a device at the counsel tables instead of from the podium, you must supply your own extension. Some common solutions include:

An extension cable (which has one female end and one male end).



An HDMI coupler (which has two female ends) plus a second cable.

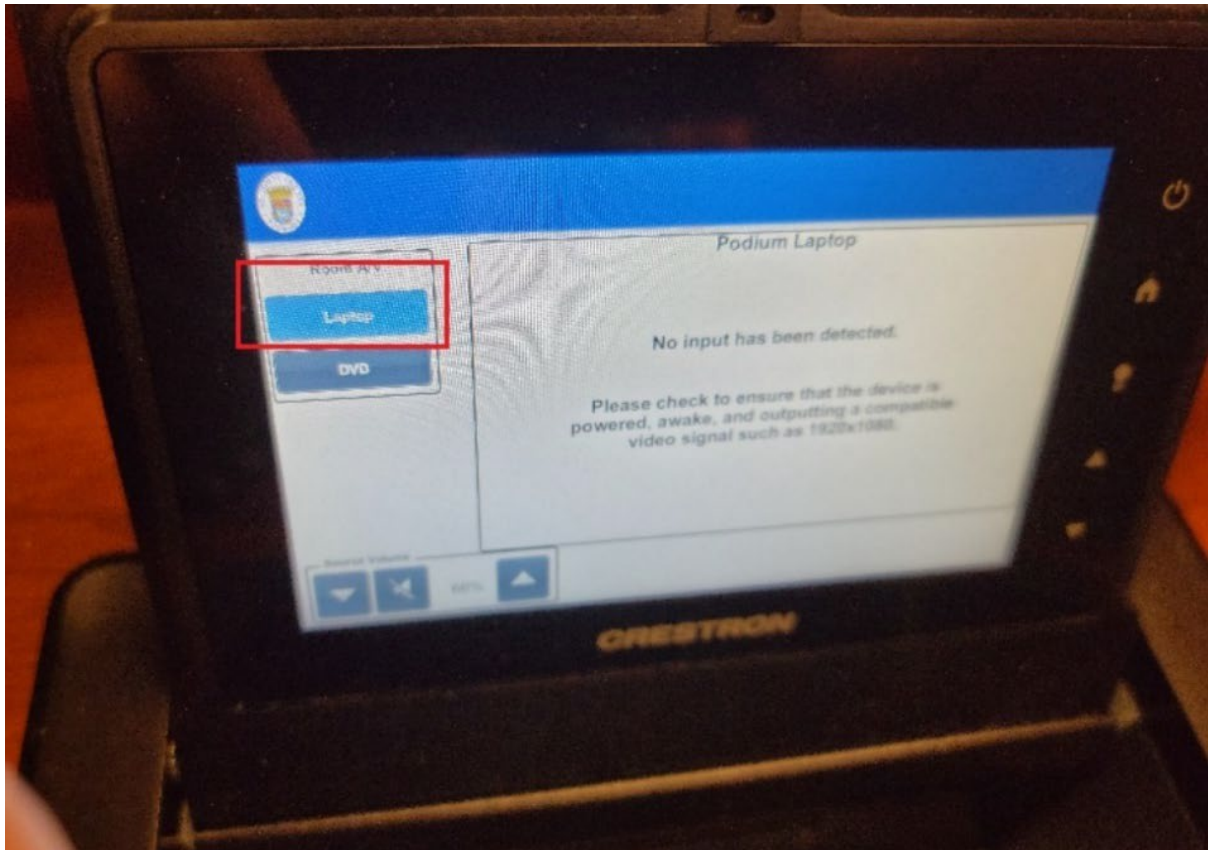


You could also use an HDMI switch box with an additional cable.



You will be responsible for securing any cable you run across the floor, but you may not use tape with a heavy adhesive like duct tape. Instead, use a Velcro type covering, a molded channel, or tape that will not leave a glue residue or otherwise mar the carpeting, such as a light duty gaff tape or other tape with a light adhesive (often labeled as “easy release,” “clean release,” or something similar).

The output from your laptop or other device connected at the podium is sent to the screens by touching the “Laptop” button on the podium’s touch panel. If the touch panel is black, it will wake up if you touch anywhere on the screen.



Please note that the County provides public Wi-Fi as a courtesy to the public. Users should test their equipment before the hearings as Court Technology cannot support users' devices and public Wi-Fi.